

No Place Like Home - What's great about where we live?

Overview - Where we live

We all live in different places and with different people.



Our School is located in the town of Aylsham



Where does Aylsham fit within the United Kingdom?

Countries in the United Kingdom England:

England is the largest country in the UK.

London is the capital city. Many parts of England are flat but there is also lots of rural countryside with rolling hills and valleys in the north.

Scotland: Scotland is a country in the north of the UK.

Edinburgh is the capital city. Scotland has large mountains including Ben Nevis, which is the largest in the UK.

Northern Ireland: Northern Ireland is the smallest country in the UK. Belfast is the capital city. One of the most famous landmarks is Giant's Causeway (natural rock steps mostly hexagonal in shape).

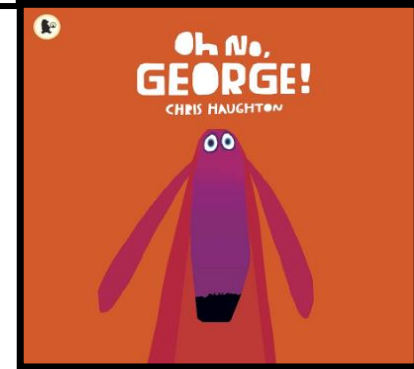
Wales: Wales is a mountainous country in the west of the UK. Cardiff is the capital city. Wales has its own language (Welsh). Not everyone there speaks it though



English - Key Books

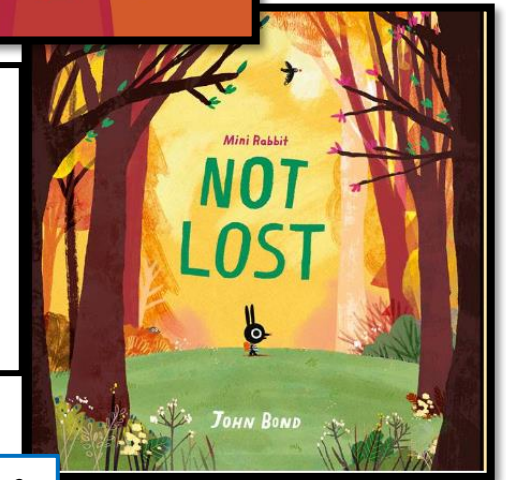
'Oh No, George!' by Chris Haughton

We have a plan, Harris is off to do some shopping. "Will you be good, George?" he asks his dog. George hopes he can. He really wants to but chocolate cake is just so very delicious and he does love to chase cat. What will George do now?



'Mini Rabbit Not Lost' by John Bond

A deliciously funny debut from a major new talent! Mini Rabbit is making a cake. Cake, cake, cake! But he's run out of berries. No berries, no cake. No cake? No way! So off he goes to look for some... He's not cold, not too small. And, no, no, definitely NOT LOST... or is he?



Books help us to talk and write.

- What is the story about?
- Who were the main characters?
- What did you like?
- What didn't you like?
- What surprised you?
- What puzzled you?

Key Vocabulary

Human features	are things like houses, roads and bridges. They have been built by people .
Physical features	like seas, mountains and rivers are natural . They would be here even if there were no people around.
City	A city is a large town. Each country has a capital city, which is usually one of the largest cities.
Town	A town is a large group of houses, shops and factories where people live. Towns are larger than villages but smaller than cities.
Village	A village is a small group of houses, perhaps with a few shops, that are often in the countryside.

More Geography...

Human or physical features?
Town, City or Village?



Science...

Can you name and describe the four different seasons?...

